

WHY IPEM IS DIFFERENT

IN CANNES – FOR 3 DAYS IN JANUARY (22/23/24 Jan. 2019, 4th edition)
> THE WORLD'S LARGEST PRIVATE CAPITAL MARKETPLACE GATHERING
THE INDUSTRY'S COMPLETE VALUE CHAIN

A 100% business-oriented format...

IPEM is the only Private Capital Trade Exhibition, with 150+ exhibiting companies (among which 75+ GPs) and a 8,000sqm exhibition area.



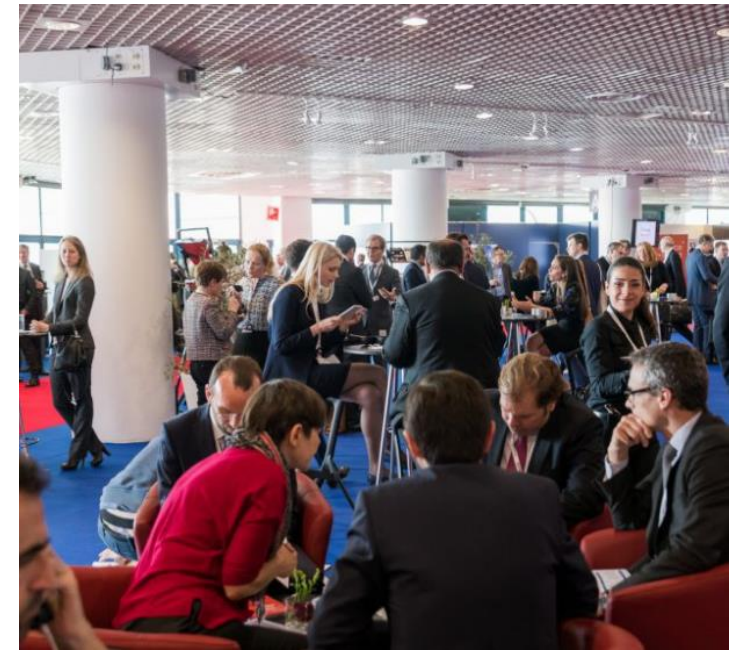
Multiple networking opportunities

IPEM is designed to foster business connections and networking both at le Palais des Festivals and in the city of Cannes.



Fast growing attendance !

Participants love IPEM's concept and atmosphere. In three editions only, IPEM quickly became a reference for the International Private Capital industry.



IPEM IN FIGURES

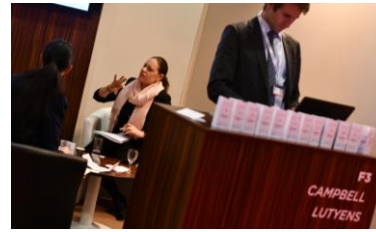
250+
LPs



250+
GPs



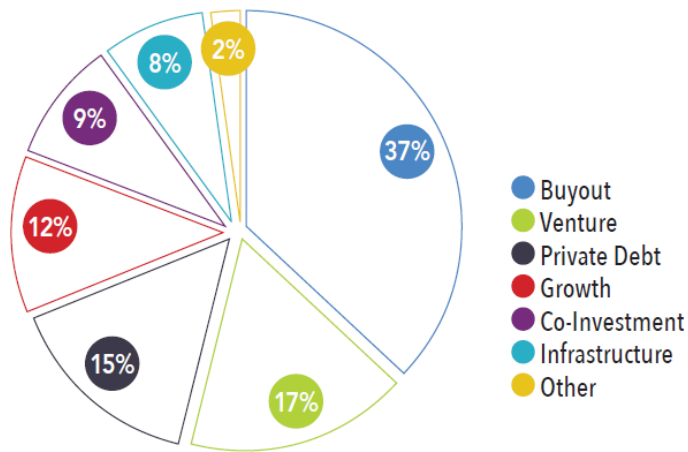
150+
Advisors



50+
Media &
Industry Partners

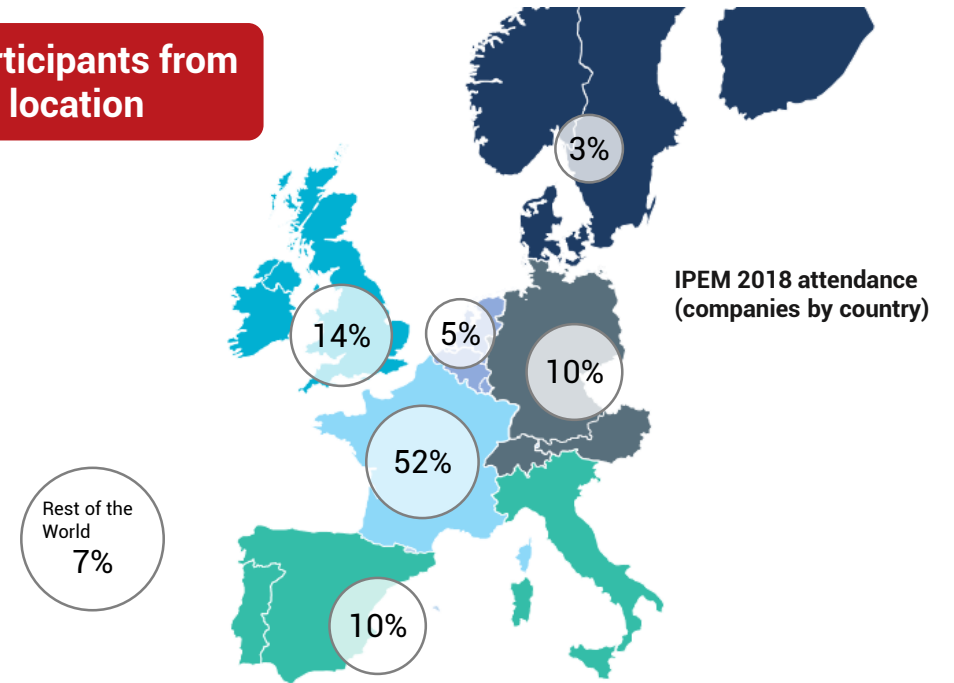


**IPEM covers the complete
Private Capital industry...**



Funds raised by GPs attending IPEM 2018, by type
(2010-2017 / Source : Preqin)

**... attracting 1,600+ participants from
30+ countries all in one location**



IPEM 2018 attendance
(companies by country)

SAMPLE PARTICIPANTS

SAMPLE GENERAL PARTNERS



PARAGON PARTNERS

SOFINNOVA
PARTNERSTHE CARLYLE GROUP
GLOBAL ALTERNATIVE ASSET MANAGEMENTANTIN
INFRASTRUCTURE PARTNERS

INVESTCORP

argos.
wityu

EQUISTONE

PORTOBELLO
capitalACTIVA
CAPITAL

SAMPLE LIMITED PARTNERS



Hermes GPE



NEUBERGER BERMAN



CapitalDynamics



Buyse & Partners

EQUISTONE

PANTHEON

